



Tampa Commercial Real Estate

www.TampaCommercialRealEstate.com

Steven@TampaCommercialRealEstate.com

Steven Silverman Broker

813.785.3665 Phone



Office Strip Center for Sale

Professional Office Building -15711 Mapledale Bv Tampa FL 33624



- Price:** \$1,049,000
- Building Size:** 8,867 sf
- Land:** 0.8433 ac
- Zoned:** PD Planned Development
- Year Built:** 1999—Well maintained and clean appearance
- Parking:** 44 spaces with a circular drive allows easy access

This center is owned by a dentist who occupies Suite B. This suite features 8 operatory rooms. The Seller is willing to sell the property and lease back his suite if the purchaser wants him to stay as a tenant. Or he will relocate if his space is needed by the Buyer.

The remaining suites have been vacated and are ready for lease

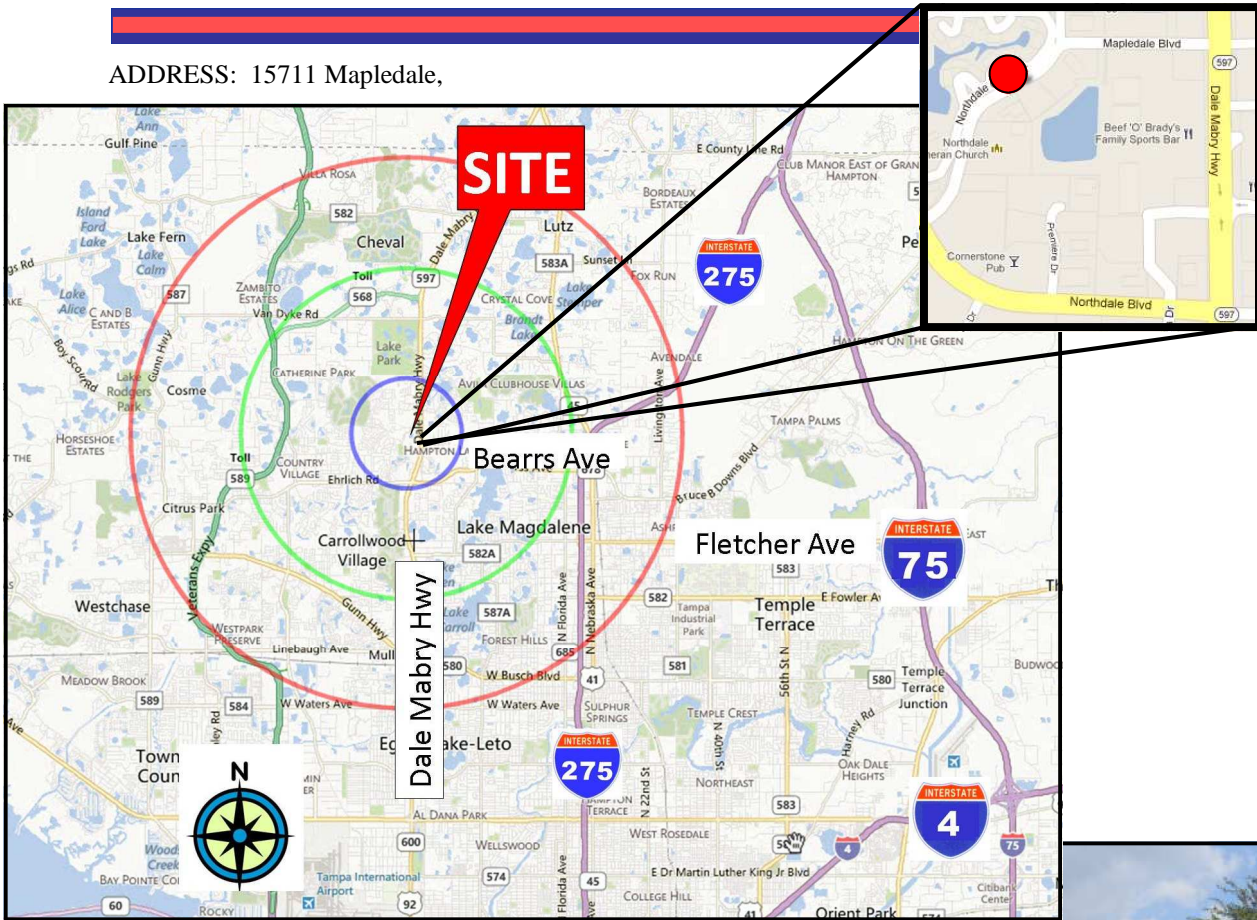
This property is located in the heart of community and offers exceptional convenience to local residents. It sits directly behind a major shopping center on N Dale Mabry Ave. On one side is a kindergarten and on the other is a school. Across the road is an apartment development. Dense residential development. Close to schools

This is an opportunity for an owner-user that wants rental income or a for an investor

- Suite A: 1,668 sf—former photography studio
- Suite B: 3,964 sf—dental office—
- Suite C: 1,072 sf—general office
- Suite D: 1,180 sf approx. former real estate agency office
- Suite E: 700 sf approx. former psychology office



ADDRESS: 15711 Mapledale,



Market Area Demographics

	2010	1 MILE	3 MILES	5 MILES
POPULATION		13,403	70,741	189,382
HOUSEHOLDS		5,670	28,408	76,648
MED AGE		37.1	40.0	37.0
MED HH INCOME		\$61,034	\$63,899	\$55,107
AV HH INCOME		\$70,953	\$79,992	\$70,330



ADDRESS: 15711 Mapledale



Dental Office



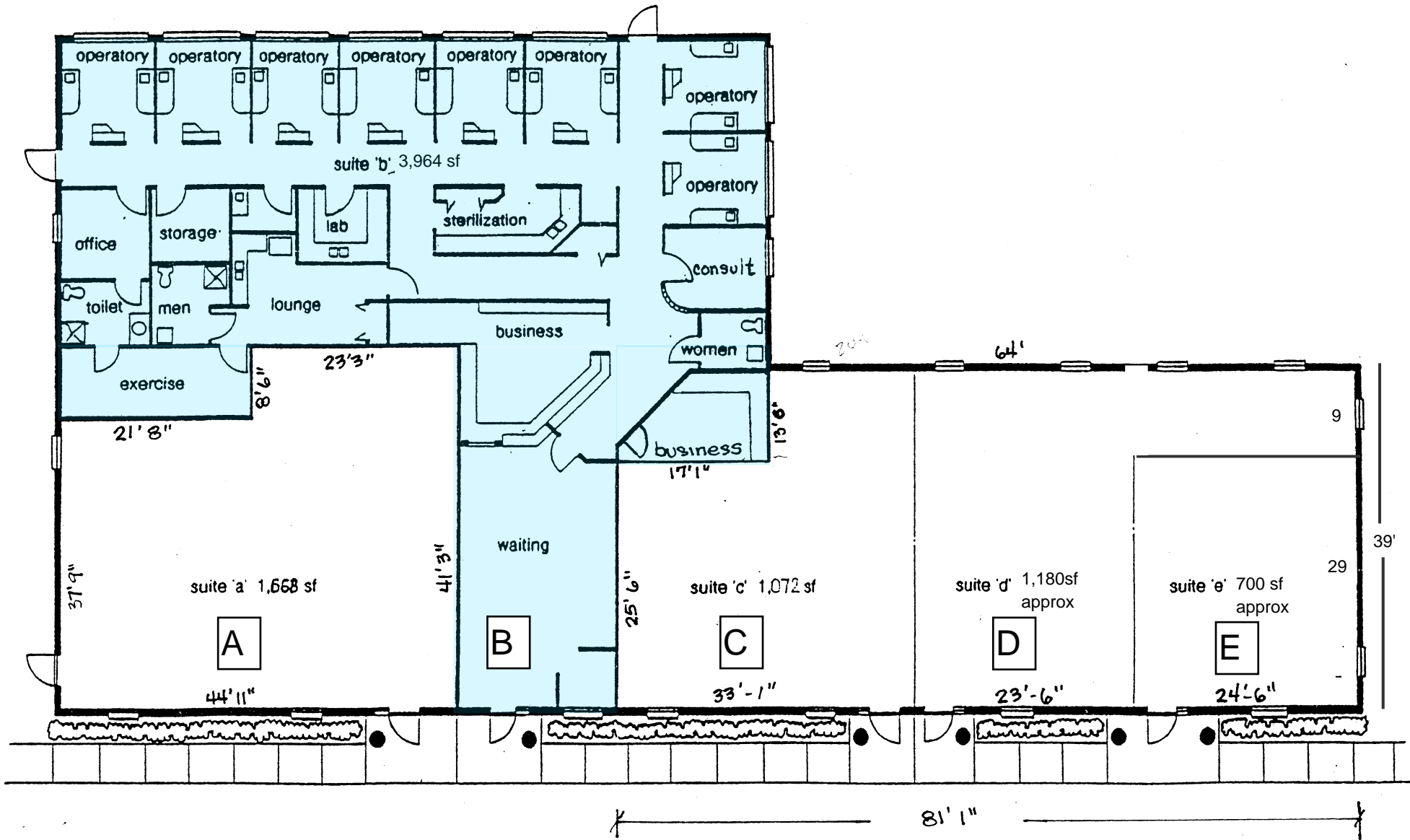
Other Office Suite Photos



Steven@TampaCommercialRealEstate.com (813) 785-3665

**TAMPA COMMERCIAL
Real Estate**

Information herein has been obtained from sources deemed reliable. We cannot guarantee accuracy.



floor plan 8,576 sf