



Tampa Commercial Real Estate

Steven Silverman, Broker

Phone: 813.785.3665

TampaCommercialRealEstate.com



RETAIL BUILDING FOR SALE

370 34TH ST S, ST PETERSBURG, FL 33711 - PINELLAS COUNTY



Building Size: 1,408 sf
Built: 1993
Zoning: CCS1 Retail/Office
Land: 0.6 Ac
Parking: Plenty
Traffic Count: 37,000 cars/day
For Sale: \$500,000



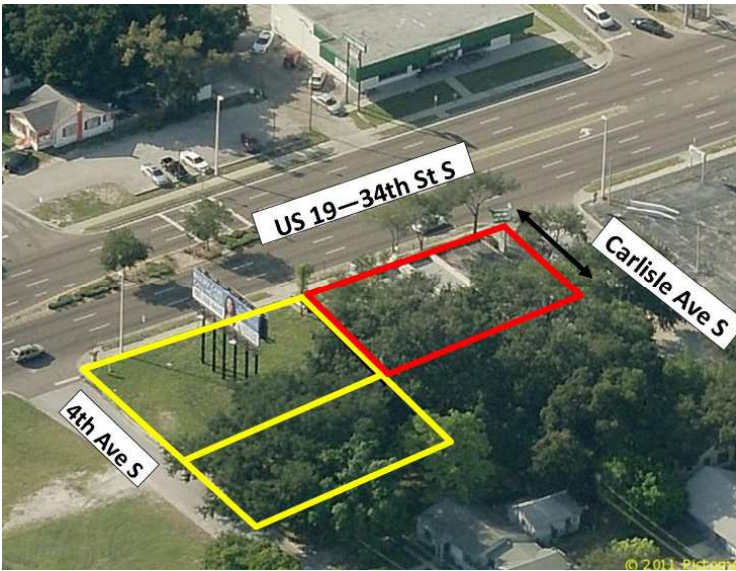
A free standing attractive building on US 19. A six lane highway with a high traffic count. Excellent visibility . Property includes two commercial corners. .Prominent signage. Formerly occupied by Ace Check Cashing. Service. Currently set up with teller windows separating the customer and cashier areas. The property offered consists of three lots containing one commercial building. Room for parking and/or additional improvements. Frontage on US 19 spans the entire block. Total Land Area available is 0.38 + 0.20 Ac = 0.58 Ac. An excellent redevelopment opportunity

2010	1 Mile	3 Mile	5 Mile
Population	13,527	122,524	267,617
Households	5,110	52,555	118,104
Med Age	34.7	41.8	45
Med HH In- come	\$36,946	\$38,298	\$43,000

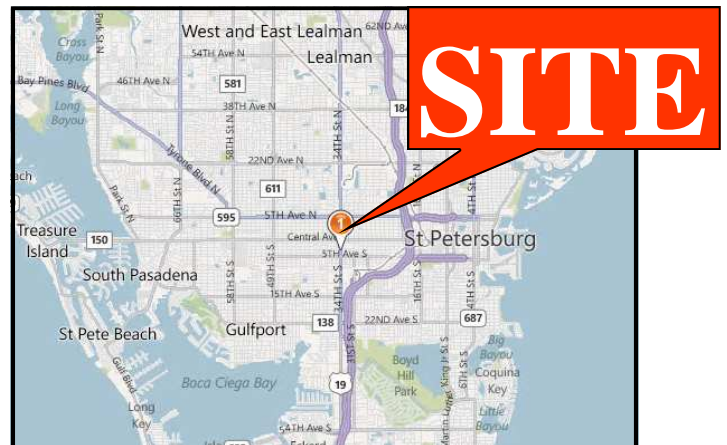


ADDRESS: 370 34TH ST S,

Lot with Building



Three commercial lots combined



Steven Silverman, MBA. CCIM.

**TAMPA COMMERCIAL
Real Estate**

Information herein has been obtained from sources deemed reliable. We cannot guarantee accuracy.