



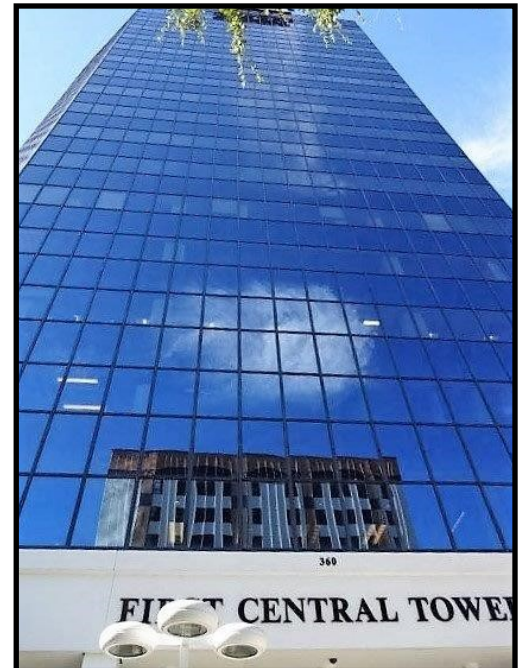
Tampa Commercial Real Estate

Broker: Steven Silverman
Tel: 813-785-3665

www.TampaCommercialRealEstate.com
Steven@TampaCommercialRealEstate.com

OFFICE SUITE FOR LEASE

360 Central Avenue, Suite 1560; St. Petersburg, FL 33701 Pinellas County



Suite 1560: 1,473 SF.

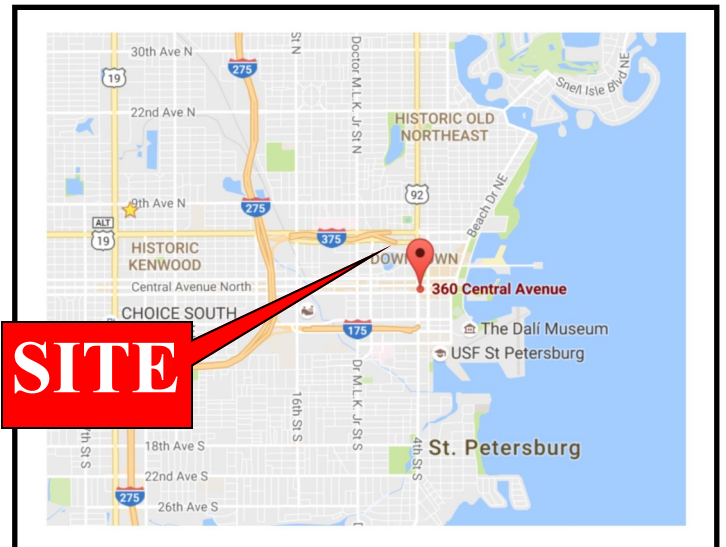
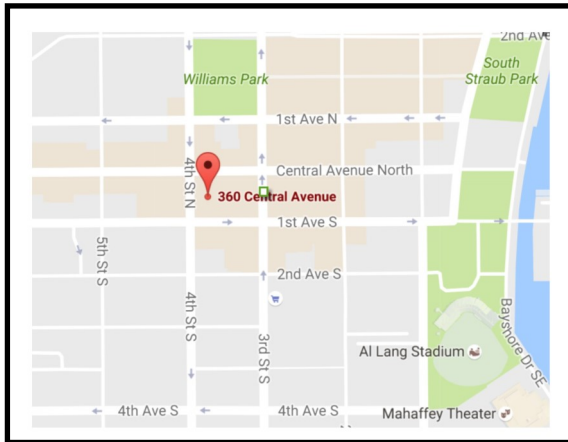
- A magnificent office suite available for sublease at below market rent
- For Lease at \$23.00/sf - annual 3% escalation (Market Rate is \$26/sf in this building.)
- Full Service
- Prestigious Building
- Spacious and Airy with inspiring views
- Available at once.
- Sublease extends through March 2019.
- Located in the heart of St Petersburg. Walk to restaurants.
- Credit Tenants only - sublease is subject to Landlord approval



For more information: Steven Silverman (813) 785-3665 e:steven@TampaCommercialRealEstate.com

Information herein has been obtained from sources deemed reliable. We cannot guarantee accuracy. Subject to change or withdrawal without notice.

ADDRESS: 360 Central Ave, Suite 1560



Window view



Elegant Lobby

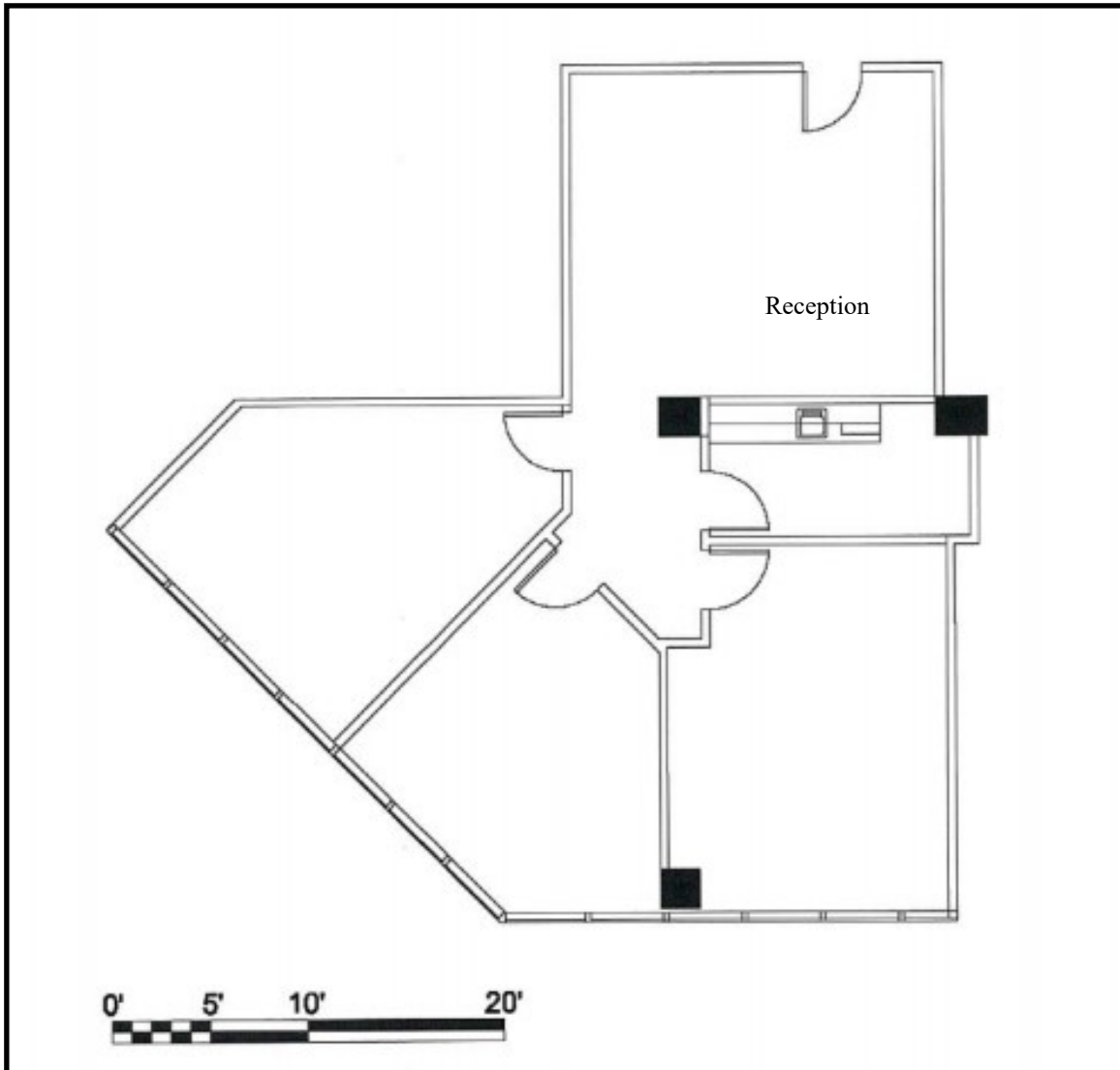


Steven@TampaCommercialRealEstate.com (813) 785-3665

**TAMPA COMMERCIAL
Real Estate**

Information herein has been obtained from sources deemed reliable. We cannot guarantee accuracy.

ADDRESS: 360 Central Ave, Suite 1560



Steven@TampaCommercialRealEstate.com (813) 785-3665

**TAMPA COMMERCIAL
Real Estate**

Information herein has been obtained from sources deemed reliable. We cannot guarantee accuracy.