

# FOR LEASE— Prof. Office/Retail

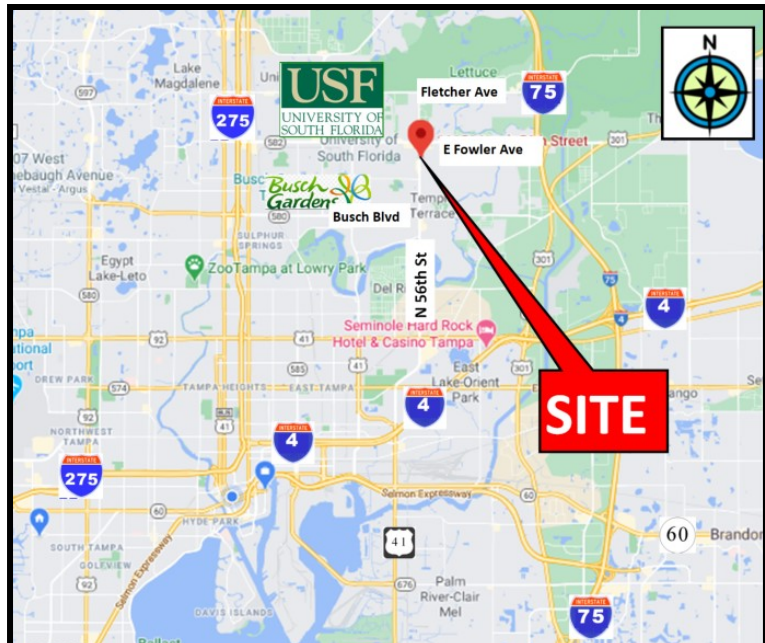


TAMPA  
COMMERCIAL  
REAL ESTATE

## 11151 N 56th St, Tampa FL 33617



- For lease 1,116 sf
- Lease Rate : 18.00/sf modified Gross.  
Monthly payment = \$1,674/sf + sales tax 8%
- Formerly Sylvan Learning Center
- Terrific professional office
- Excellent visibility on busy 56th St
- Signage
- 35,000 traffic count on 56th st per day
- Close to University of South Florida
- Ample parking
- In the City of Temple Terrace
- Zoning: CG Commercial General



For more information please contact:  
Steven Silverman, Broker (813)785-3665  
Steven@TampaCommercialRealEstate.com

Information from sources deemed reliable. Broker is not responsible for errors & omissions.

11151 N 56th St



Excellent road side visibility

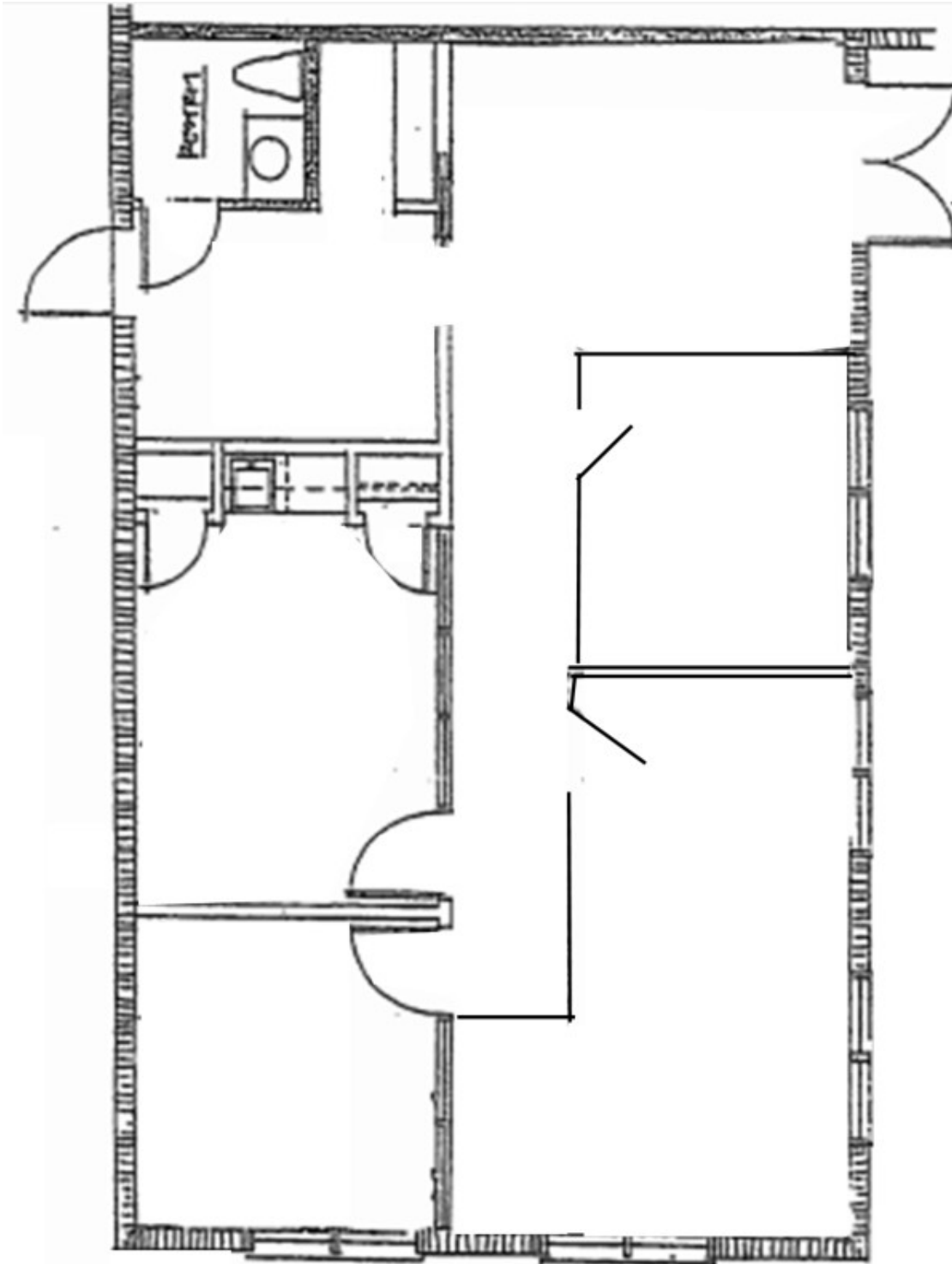


TAMPA COMMERCIAL REAL ESTATE

Information from sources deemed reliable. Broker is not responsible for errors & omissions.



11151 N 56th St



**TAMPA COMMERCIAL REAL ESTATE**

For more information please contact:  
Steven Silverman, Broker (813)785-3665  
Steven@TampaCommercialREalEstate.com  
www.TampaCommercialRealEstate.com