

# FOR LEASE— Prof. Office/Retail

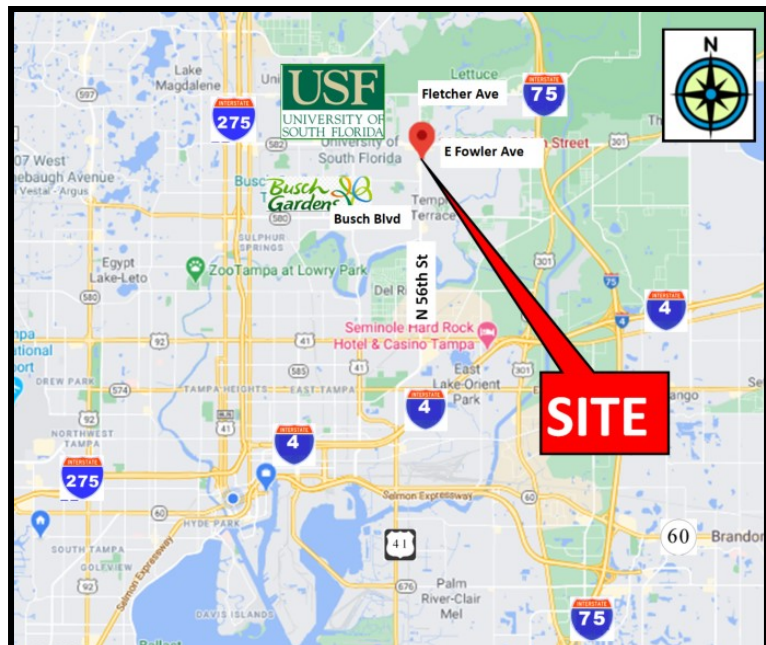


TAMPA  
COMMERCIAL  
REAL ESTATE

## 11151 N 56th St, Tampa FL 33617



- For lease 1,116 sf
- Lease Rate : 19.00/sf modified Gross.  
Monthly payment = \$1,767 + 7% sales tax.
- Terrific professional office or salon
- Excellent visibility on busy 56th St
- Signage—Pylon + Buiding
- 35,000 traffic count on 56th st per day
- Close to University of South Florida
- Ample parking
- In the City of Temple Terrace
- Zoning: CG Commercial General



For more information please contact:  
Steven Silverman, Broker (813)785-3665  
[Steven@TampaCommercialRealEstate.com](mailto:Steven@TampaCommercialRealEstate.com)

Information from sources deemed reliable. Broker is not responsible for errors & omissions.

11151 N 56th St



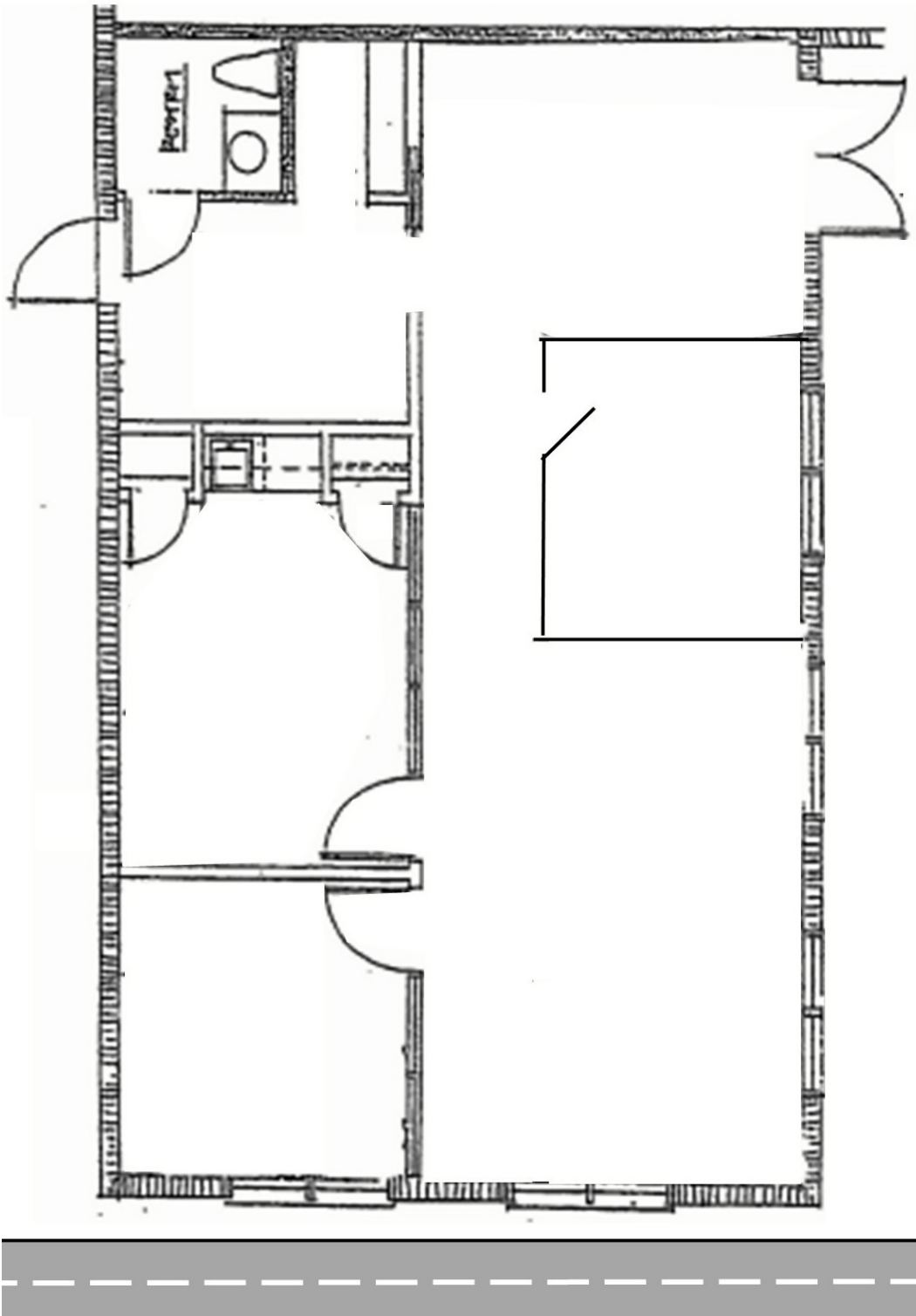
Excellent road side visibility



**TAMPA COMMERCIAL REAL ESTATE**



11151 N 56th St



**TAMPA COMMERCIAL REAL ESTATE**

For more information please contact:  
Steven Silverman, Broker (813)785-3665  
Steven@TampaCommercialREalEstate.com  
www.TampaCommercialRealEstate.com