

FOR SALE

Medical/ Office/Retail



TAMPA
COMMERCIAL
REAL ESTATE

11910 Little Rd, New Port Richey. FL 34654



- Price \$599,000
- Size: 1,984 sf on 0.32 acres. Free standing single tenant building
- Current Use: Office Medical/Prof.
- 5 Exam Rooms, Reception, 2 bathrooms, break room
- Est 18 parking spaces. Pylon Sign
- Zoned C2—Commercial General
- Corner property—high visibility
- High traffic Count: 39,000 cars/day



Information from sources deemed reliable. Broker is not responsible for errors & omissions.

For more information please contact: Steven Silverman, Broker
Tel (813)785-3665 Steven@TampaCommercialRealEstate.com

11910 Little Rd

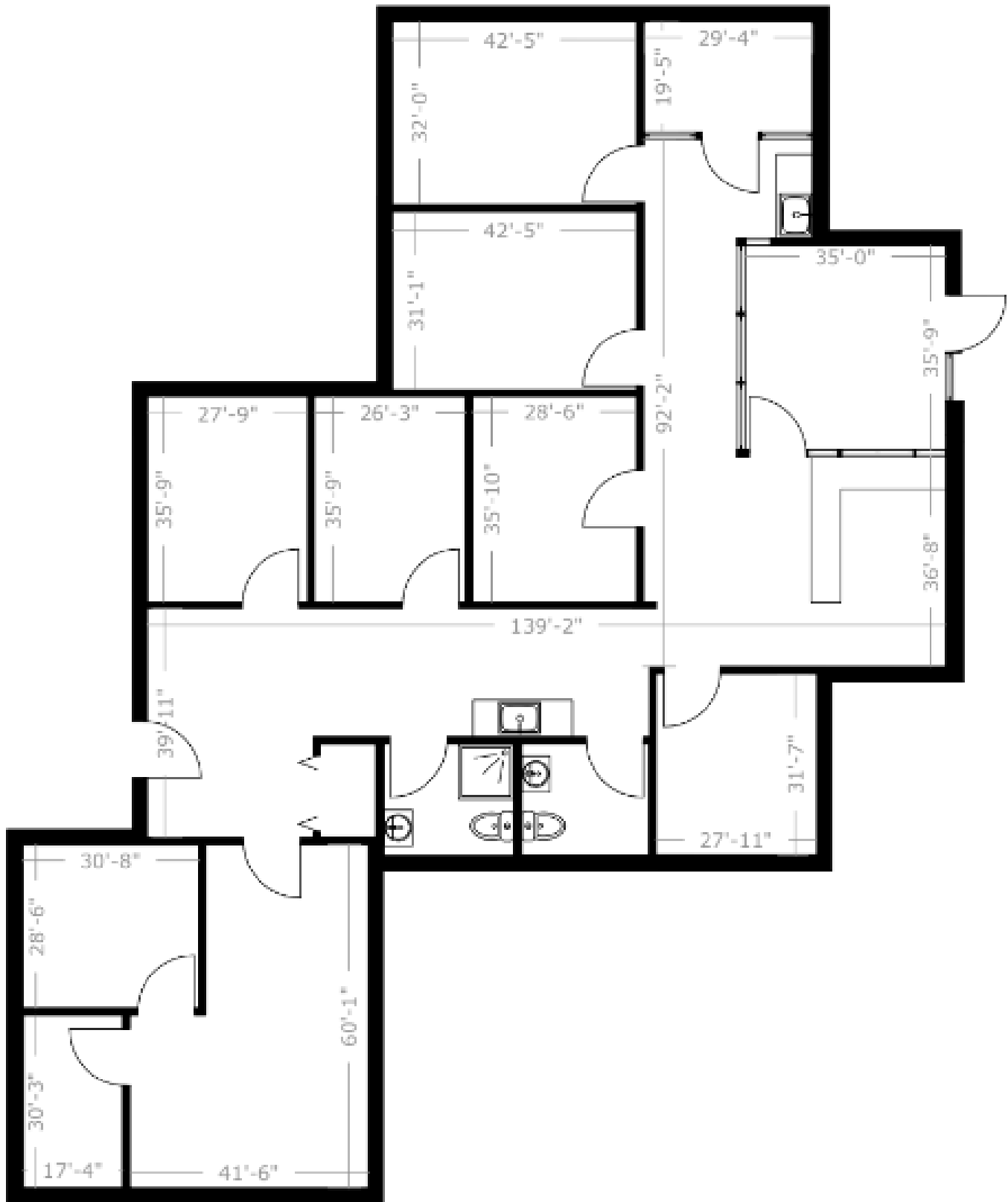


TAMPA COMMERCIAL REAL ESTATE

Information from sources deemed reliable. Broker is not responsible for errors & omissions.

11910 Little Rd

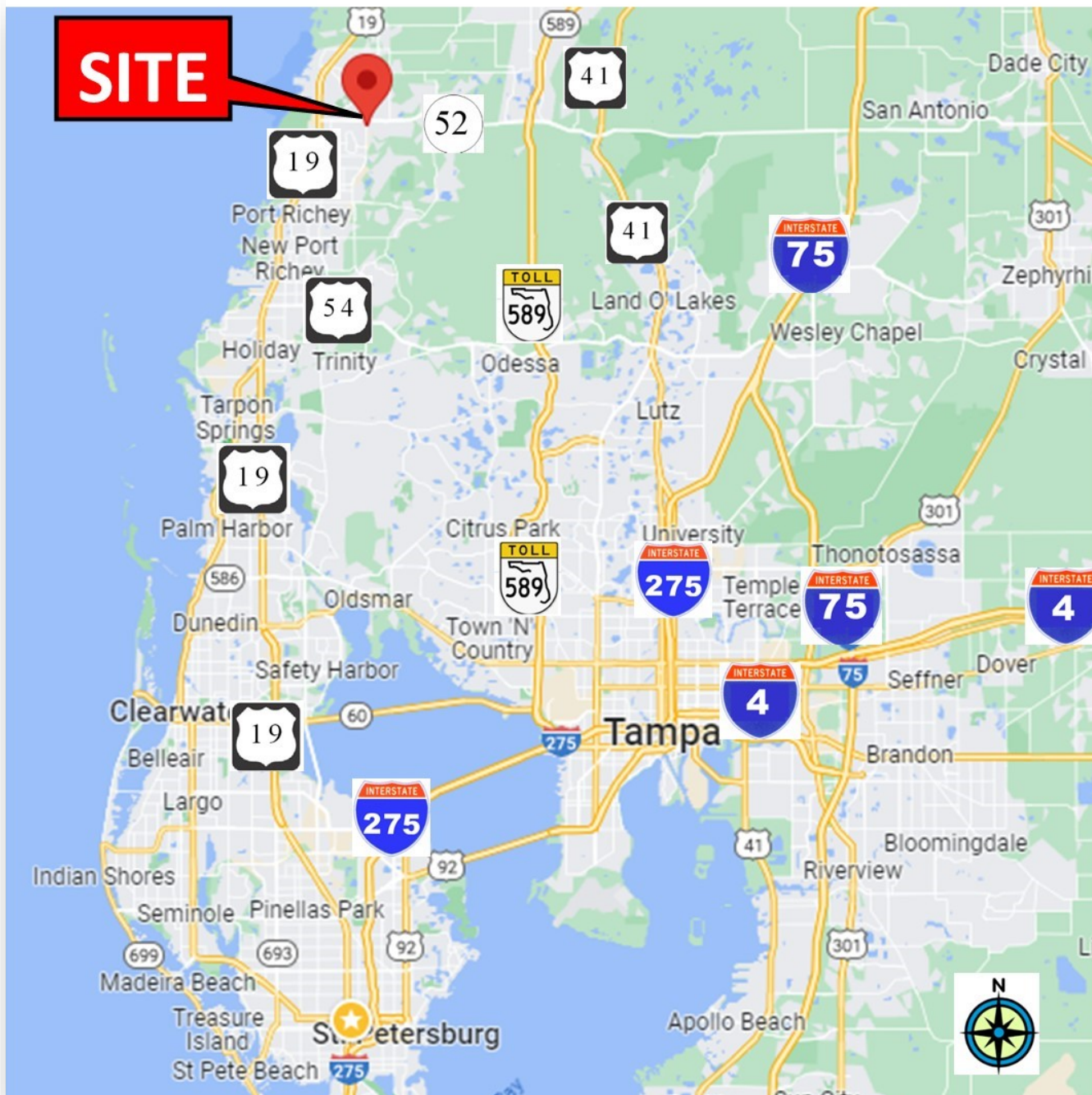
Little Rd



TAMPA COMMERCIAL REAL ESTATE

11910 Little Road

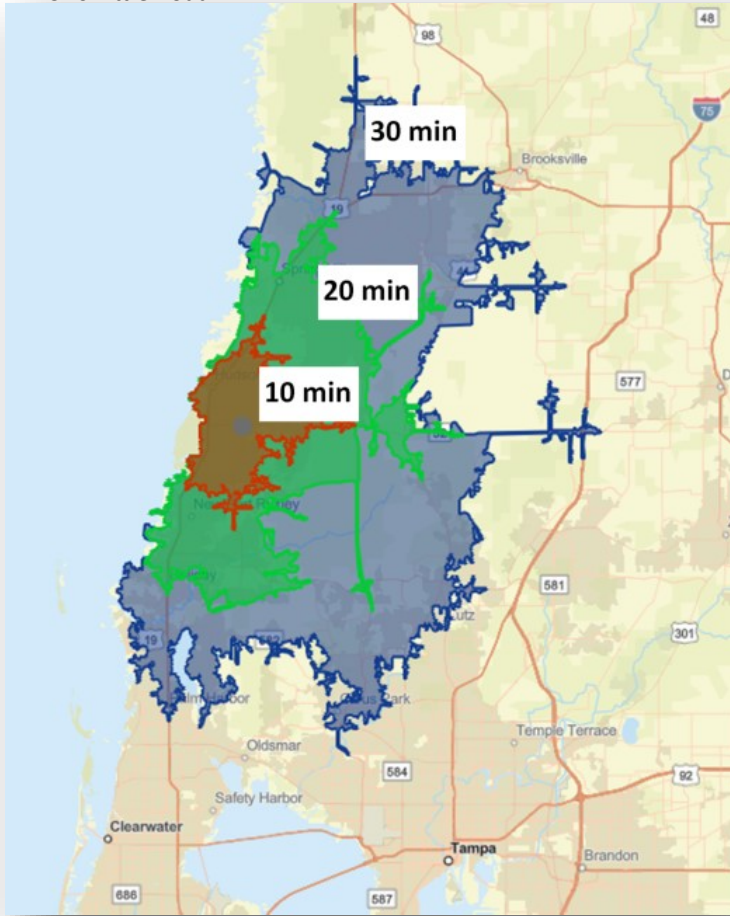
Map Location



TAMPA COMMERCIAL REAL ESTATE

Information from sources deemed reliable. Broker is not responsible for errors & omissions.

11910 Little Road



Market Area Demographics

Drive Time from Site

2023	10 min	20 min	30 min
POPULATION	89,865	276,866	609,143
HOUSEHOLDS	29,048	118,614	249,186
MED AGE	51.7	49.7	48.1
MED HH INCOME	\$44,567	\$51,420	\$60,415
AV HH INCOME	\$60,149	\$72,493	\$90,177

Traffic Count



TAMPA COMMERCIAL REAL ESTATE