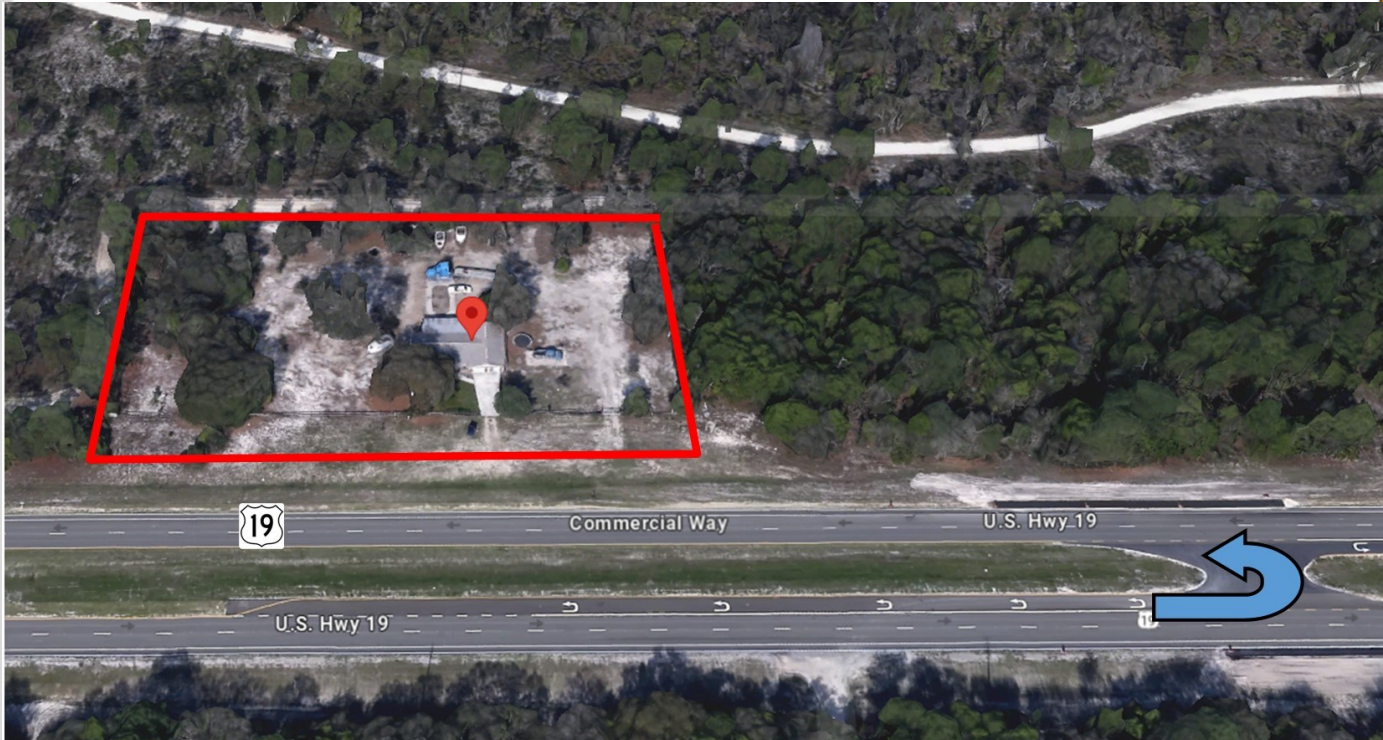


Medical-Office-Daycare FOR LEASE



TAMPA
COMMERCIAL
REAL ESTATE

15451 Commercial Way, Weeki Wachee. FL 34614



- For Lease—Free Standing Medical, Office, Daycare
- 1.83 acres with 400' frontage on US 19
- Zoning: C2 General Commercial—new code allows 60 ft height on US 19
- Access on US-19 (no access road required)
- Close to an existing turn-around where there is a notice of intent for a traffic light
- 18,000 new rooftops with high HH income plus new commercial development
- PID: R24 421 17 0000 0050 0000
- Located in an Opportunity Zone

The property is bordered on three sides by the 85,000-acre Chassahowitzka National Wildlife Refuge which provides a pristine habitat for wildlife, flora and fauna.

The site is unique because it is one of the only properties on US 19 that has the approval for direct access to US 19. Other properties are forced to have ingress and egress from a frontage road. The easy access plus the excellent exposure to US 19 positions the property to capture traffic in this fast growing area.

Ideal for Gas station, Medical, Office, Restaurant, Retail, Day Care.

For more information please contact:
Steven Silverman, Broker (813)785-3665
Steven@TampaCommercialREalEstate.com
www.TampaCommercialRealEstate.com

Address: 15451 Commercial Way

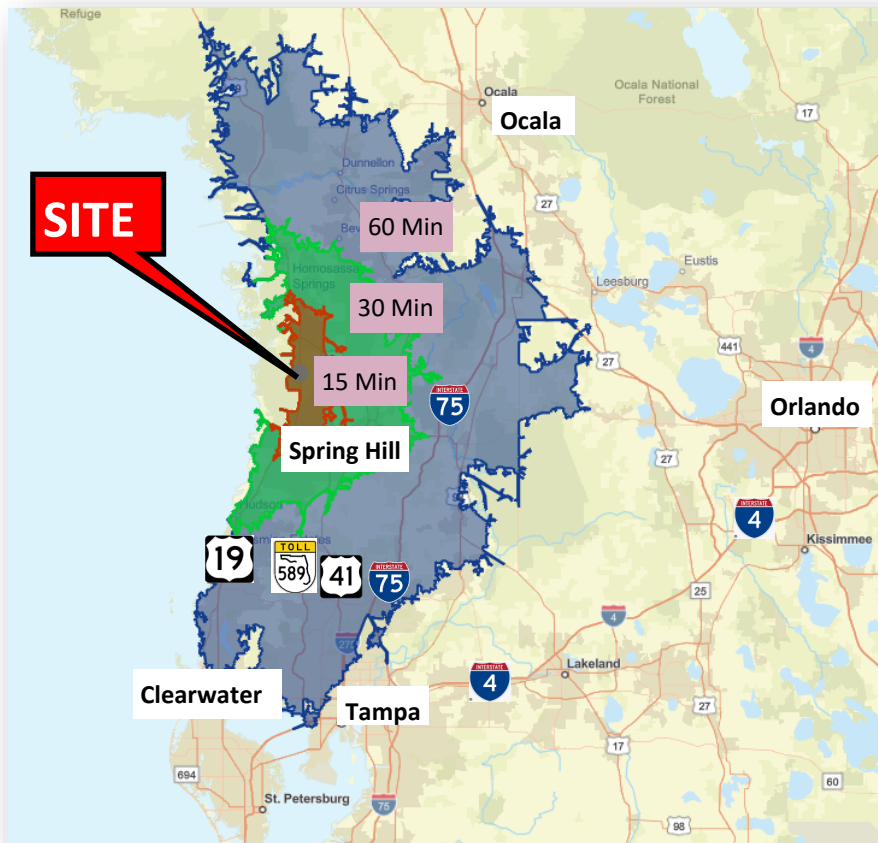
About Hernando County

Hernando County has land, and it is cost-effective. Once considered remote part of Tampa Bay that was removed from the Tampa Bay economic engine, regional growth has changed that calculus.

Thousands of people are moving to Hernando County each year. Hernando County is part of Tampa Bay. The appeal is that housing in Hernando County is much more affordable than other areas of Tampa Bay. It is not just retirees that are coming. The county has attracted young families. Once considered the most rural part of Tampa Bay, the highway system helped Hernando flourish as a bedroom community. It is now only 45 minutes drive to downtown Tampa and Clearwater. To accommodate the influx of residents, the County has been updating infrastructure. Airport runways are being extended and new homes, subdivisions, schools, hospitals are being built. Commercial users are also focusing on Hernando County, bringing employment. The supply of Retail and Office is increasing dramatically. Large distributors and industrial users, mindful of cost are also taking a close look at Hernando County. Forecasters project that rapid growth will continue for years to come.

The traffic count is increasing by 7% per year. The estimated Daily Traffic Count on US 19 is 14,600 vehicles/day.

Drive-Time from Site



TAMPA COMMERCIAL REAL ESTATE

For more information please contact:
Steven Silverman, Broker (813)785-3665
Steven@TampaCommercialREalEstate.com
www.TampaCommercialRealEstate.com

Address: 15451 Commercial Way

Residential Development

Quarry Preserve:

- 5,800 dwelling units.
- 200 hotel units. 2 golf courses. 850,000 sf Office park,,
- 545,000 sf neighborhood commercial,
- School

Sugar Mill Woods : 2,000 acres

- Just N in Citrus County
- Divided into 6 villages with 24,000 lots

Cabot Citrus Farms : 1,200 acres

- 980 residential units
- 400,000 sq. ft. of mixed-use non-residential facilities, including retail stores, golf and other publicly-accessible recreational facilities, restaurants, and community centers

The Canopy

- 227 homes PHASE I
- 177 homes PHASE II
- 208 homes PHASE III
- 169 homes PHASE IV

Chicago

300 homes

200 home subdivision

SITE

Lake Hideaway: A 872-acre master-planned community.

- 3,700 residential dwelling units.
- 5,000 square feet of commercial use on US 19.
 - 25,000 square feet of commercial and 150,000 square feet of office.
- A Lagoon that is an active recreational water amenity.
- Charter School

Glen Lakes. A master-planned golf course community . The community is divided into villages, each with its own flavor. At build out, it should have 1,500 single family homes spread across 1,400 lush subtropical acres

For more information please contact:
 Steven Silverman, Broker (813)785-3665
 Steven@TampaCommercialREalEstate.com
 www.TampaCommercialRealEstate.com

TAMPA COMMERCIAL REAL ESTATE